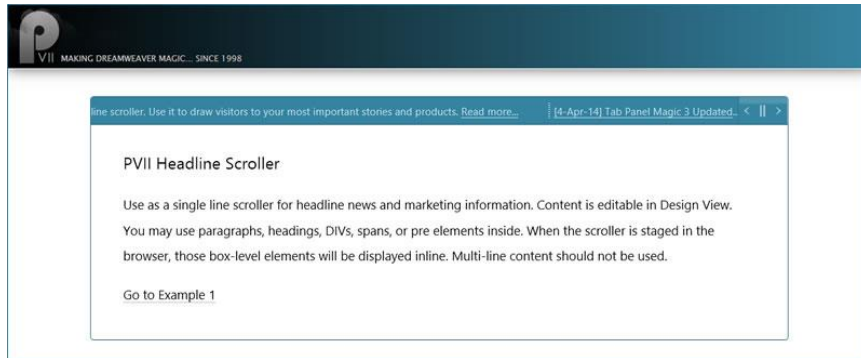


# PVII HEADLINE SCROLLER MAGIC

The state of the art in Dreamweaver widgets...



Create gorgeous and responsive headline scrollers in Dreamweaver with just a few clicks!

We hope you enjoy using this product as much as we did making it.

**Al Sparber & Gerry Jacobsen PVII**

## INSTALL THE EXTENSION

Extension installer files come in 2 formats: MXP and ZXP. MXPs are supported by Extension Manager versions MX, MX2004, 8, CS3, CS4, CS5, CS5.5 and CS6. ZXP is supported by versions CS5.5 and higher. Version CC and higher have dropped support for the MXP format. To continue to support all Adobe customers, regardless of version, we include both the classic MXP and the new ZXP versions.

### For version CS6 and older:

Look for the extension installer file **p7\_HLS\_111.mxp** in the root of the zip archive you downloaded. Double-click the files to install the extensions. Dreamweaver's Extension Manager will open and you will be prompted to complete the installation.

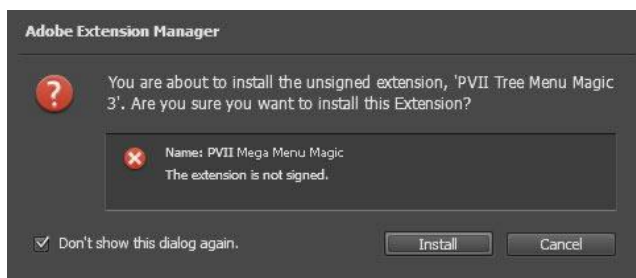
### For version CS7 and higher:

Look for the extension installer file **p7\_HLS\_111.zxp** in the root of the zip archive you downloaded. Double-click the files to install the extensions. Dreamweaver's Extension Manager will open and you will be prompted to complete the installation.

### About the ZXP Extension Installer Format

The ZXP format is identical to the tried and true MXP format developed by Macromedia with the chief difference being the file extension. It was adopted by Adobe to support its efforts to move third party extensions to the Adobe Exchange Store (for a fee)—a service we have no need for at this time.

When you install the ZXP version of *Headline Scroller Magic*, you might see this alert box, **which is totally harmless**, despite its looks.



Simply click the Install button and your extension will be installed without issue.

The purpose of a digital signature is primarily to protect the software developer's interest, ensuring that no one has altered the file from its original state. When you buy directly from the developer, in this case PVII, this is not an issue. Adobe's process to create a digital signature file requires installing third-party software that fails to meet our quality standards at this time. Even if we were able to use Adobe's software, the signature is only activated by going through Adobe's Exchange and sharing revenue with Adobe—which we have no need to do.

## WORK IN A DEFINED DREAMWEAVER SITE

Before you begin, make sure you are working inside a defined Dreamweaver web site. This is necessary so that Dreamweaver knows how to link required assets. If you are new to Dreamweaver or need to learn how to define a web site, follow these simple steps:

### **Choose Site > New Site**

#### SPECIFY LOCAL SITE LOCATION

The Site category of the Site Setup dialog box is the only one you need to fill out to begin working on your Dreamweaver site. This category lets you specify the local folder where you'll store all of your site files. When you're ready, you can fill out the other categories in the **Site Setup dialog box**, including the Servers category, where you can specify a remote folder on your remote server.

#### *SITE NAME*

The name that appears in the Files panel and in the Manage Sites dialog box; it does not appear in the browser.

#### *LOCAL SITE FOLDER*

The name of the folder on your local disk where you store site files, templates, and library items. Create a folder on your hard disk or click the folder icon to browse to the folder. When Dreamweaver resolves site root-relative links, it does so relative to this folder.

## OVERVIEW

Headline Scroller Magic (HLS) is a tool that installs inside Dreamweaver with its own automated user interface (UI), which allows you to create and manage headline scrollers on your page.

### RESPONSIVE AND MOBILE READY

The HLS system is designed to automatically respond to the size of the browser window.

### CREATE OR MODIFY


The user interface has 2 modes, **Create** and **Modify**, and will automatically open in the correct one based on your current insertion point in the document:

- If your insertion point is not within an existing HLS widget, the interface will open in **Create** mode.
- If your insertion point is inside an existing HLS widget, the interface will open in **Modify** mode.

### DREAMWEAVER TEMPLATE SUPPORT

The system is specifically designed to support Dreamweaver templates. You can insert one or more widgets into a template (.dwt) master page at any time. You can also insert one or more widgets into a template-based child page. The system will automatically detect the template and adjust to allow insertion into an editable region.


## INSERTING A NEW WIDGET

Headline Scroller Magic widgets can be inserted anywhere on your page. Once you have established your insertion point, click the icon  to open the interface. You can insert the widget into any area of your page.

The widget width will automatically adapt to its location, even when placed inside flexible DIVs or table cells. You can insert as many individual widgets as you like on your page. Each widget can be optioned independently to set different behaviors and features. Widgets on a single page can share the same style theme or be set to separate style themes.

-Establish the insertion point for your new widget by clicking in the area of the page where you would like it to be created.

**Note:** The interface is sensitive to the insertion point. If your cursor is currently inside an existing widget, the Modify interface will open instead.

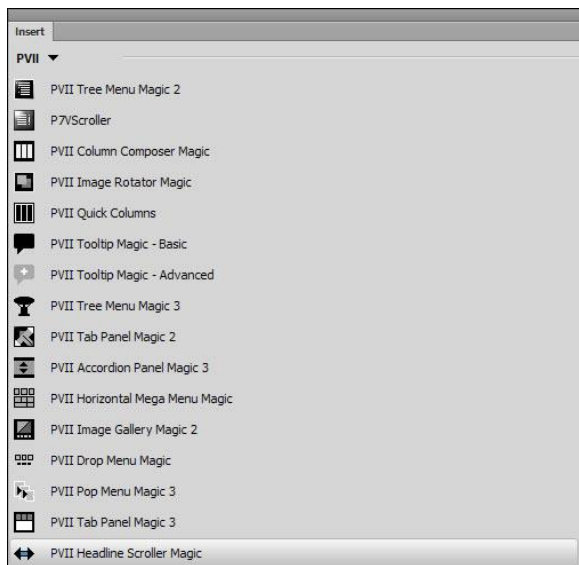
-Click the *Headline Scroller Magic* icon  in the *PVII* Section of Dreamweaver's Insert Bar.

### Classic Dreamweaver Insert Bar

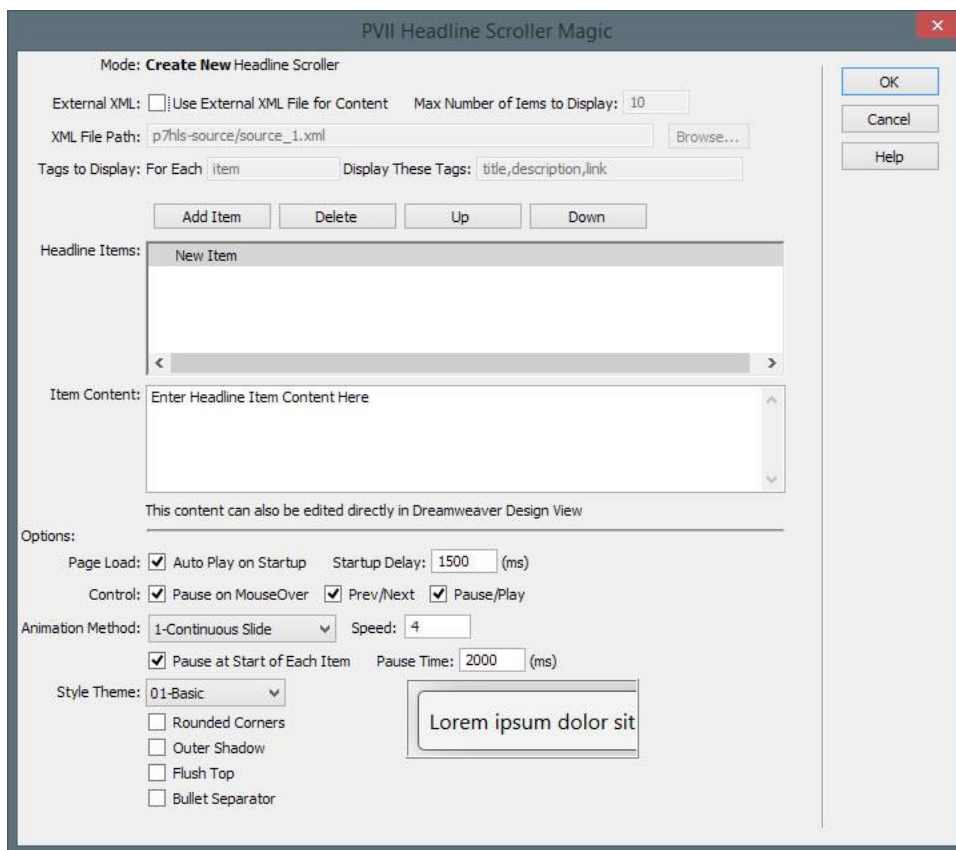


**Note:** Newer versions of Dreamweaver will only be able to display icons in shades of gray, rather than in color. If you are using the Creative Cloud version of Dreamweaver, this [Insert Panel Tutorial](#) might be of interest.

## Dreamweaver Insert Panel



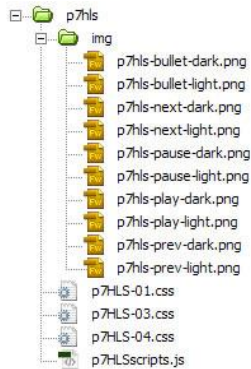
The Headline Scroller Magic user interface will open in the **Create** mode.



You can create more than one widget on your page. Add as many as you like.

### ASSET FOLDERS


When you create a widget, the system creates an assets folder named **p7HLS** at the same level as the page that contains your widget. This folder will contain the HLS JavaScript file and the relevant widget style sheet(s), as well as an **img** sub-folder that contains arrow background images used by the CSS.

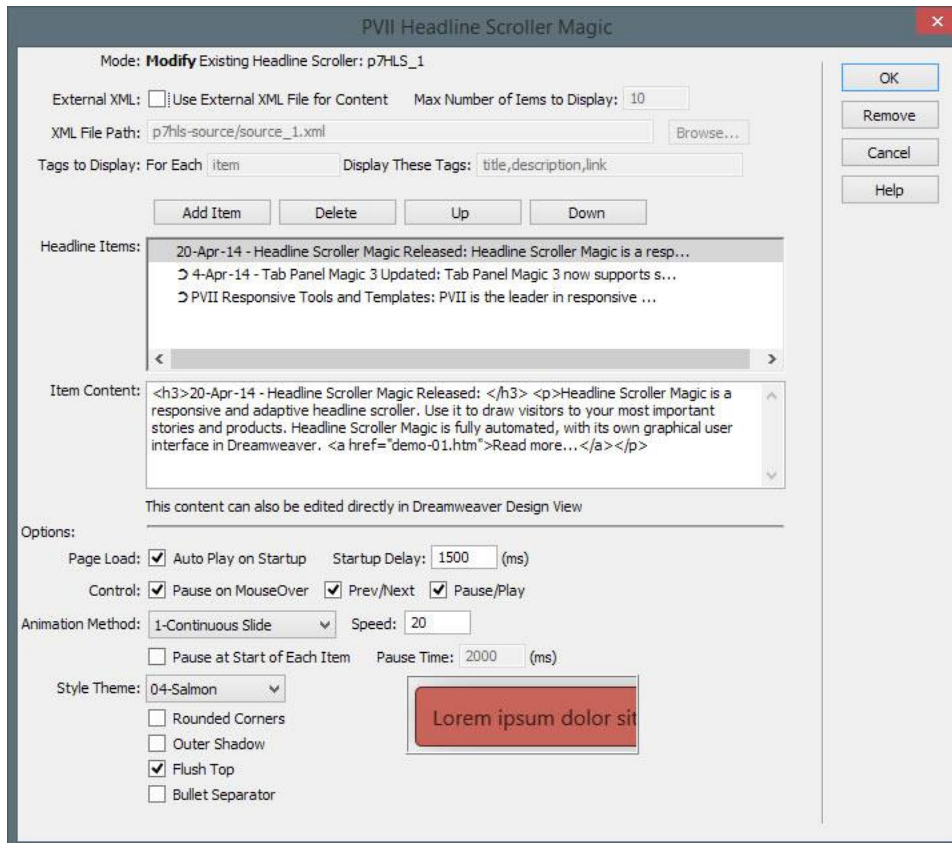


When you publish your site, make sure you upload the entire **p7hls** folder.

## USING THE INTERFACE

This section will cover the options and settings in the HSL interface. You can set options when creating or modifying new or existing Headline Scroller Magic widgets on your page at any time.

-Open the interface using the HSL icon  on the Insert Panel or Bar. If you are creating a new widget, place your cursor where you want the widget to appear. If you are modifying (editing) an existing widget, place your cursor inside that widget before you open the interface.



## MANAGING THE USER INTERFACE ITEMS

### MODE

Displays the current operational Mode for the user interface: either **Create** or **Modify**. When in Modify mode, the **id** of the widget being modified will also be displayed.



### *EXTERNAL XML*

Please see the following tutorial:

[Using Headline Scroller Magic with XML-Based External Content](#)

### *HEADLINE ITEMS*

This box displays up to the first 80 characters of your headline. Select (click) the line you wish to act on.

#### **Add ItemButton**

Click the Add Item button to add a new headline. This new item will be created immediately after the selected item. The newly created item will initially appear with the default description: ***Enter Headline Item Content Here.***

#### **Delete**

Click the Delete button to remove the selected item.

**Note:** The interface requires at least one item to be in the list at all times. The system will not allow you to delete an item if it is the only remaining one.

#### **Up**

Click the Up button to move the selected item up in the list.

#### **Down**

Click the Down button to move the selected item down in list.

### *ITEM CONTENT*

With a Headline Item selected, the content for that item can be edited in this area. The area supports HTML markup and will show any markup you add within the item—whether you write in manually in the interface or in Dreamweaver Design View. It is advisable that when you create a new item, you leave the initial default content as is...and limit your content editing to Dreamweaver's Design View.

## OPTIONS

These settings are applied to the HLS widget you are currently editing. Other widgets on the same page will not be affected and will retain their unique options.

### *PAGE LOAD*

#### **Auto Play on Startup**

This option is enabled by default. If you do not want your scroller to run, when the page loads, uncheck this option.

#### **Start-Up Delay**

You can set a delay from the time the page loads, to the time the scroller starts (if you have also selected Auto Play on Startup). The default value is **1500 milliseconds** (one and a half seconds).

### *CONTROL*

There are various configurations of toolbar controls available. You can choose any combination of controls.

#### **Pause on Mouse Over**

When this option is enabled, mousing over, or onto, the widget will automatically pause any scrolling. This option is enabled by default.

#### **Prev/Next**

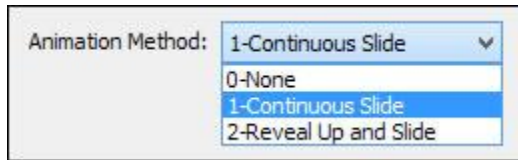
This option places a left and right arrow in the toolbar. The left arrow goes to the previous headline and the right arrow goes to the next headline. The transition will occur immediately. That is, you will not need to wait for the current headline to scroll to its end.

#### **Pause/Play**

This option places a single, pause/play icon in the toolbar. When the widget is playing (scrolling), the pause icon will be visible. When the widget is stopped, the play icon will be visible.

### *ANIMATION METHOD*

The HLS system allows you to choose from 3 animation methods—including None.



### **Speed**

This option allows you to control the animation speed. The default value is 4, which is appropriate for long headlines on flexible pages. Increase the value up to 500 to get the speed you want. The larger the value, the faster the animation.

### **Pause at Start of Each Item**

You can set and control a pause before each item begins scrolling.

### **Pause Time**

Set the time, in milliseconds for the *Pause at Start of Each Item*. 2000ms = 2 seconds.

### *STYLE THEME*

HLS comes with pre-defined CSS style themes. Choose a theme that best approximates the look you desire. This can act as a starting point from which you can later make edits to the style sheet to fully customize your widget. You can change to a different style theme at any time without affecting the content of your widget.

A preview of the selected theme is displayed to the right of the ***Style Theme*** select list. This Preview will change whenever you select a different theme.

### **Rounded Corners**

This option allows you to add rounded corners to the outer widget structure.

### **Outer Shadow**

This option allows you to add a shadow to the widget.

### **Flush-Top**

Choose this option if your widget is designed to go at the top of a layout DIV or the page itself.

### **Bullet Separator**

This option allows you to add a separator graphic between headline items.

## COMMAND BUTTONS

### OK

When you are done setting your desired options, click the **OK** button to build the widget. The system will verify your selections and alert you to any problems that need your attention. If there are no problems, the interface will close and a widget will be added to your page or updated—depending on whether you are in *Create mode* or *Modify mode*.

**Tip:** To make further changes, click inside a widget and then open the Headline Scroller Magic interface to begin your modifications.

### Remove

Click the Remove button to remove the current widget from your page.

#### *What will be Removed*

The system will completely remove the html markup for the selected widget from your page. If there are other HSL widgets on the page they will not be affected. The system will also remove the link to the relevant **CSS file if no other widget on the page is using the same style theme**. If there are no remaining HSL widgets on your page, the system will also remove the link to the HSL **JavaScript** file.

#### *What will Not be Removed*

The system will not remove the **p7hsl** folder, which contains the widget-related assets (images, JavaScript file, and CSS files). This ensures that you will not lose any assets you may have modified and any other pages that depend on those modified assets will continue to look and behave as expected.

### Cancel

Click the **Cancel** button to completely abort the current operation. This will close the interface and no changes will be made to your page.

### Help

Click the **Help** button to open the associated Help File in your browser. This page can remain open for easy reference while you continue working in the HLS interface.

## WIDGET STYLING

Please see the [HLS Style Guide](#) for CSS tips and information.

## SUPPORT AND CONTACT INFO

PVII quality does not end with your purchase - it continues with the best customer support in the business.

### *PVII KNOWLEDGE BASE*

The PVII Knowledge Base is an online PVII application allowing you to access dozens of Tech Notes, tips, and techniques relating to our products, as well as to general web development issues..

[Open the Knowledge Base](#)

### *PVII COMMUNITIES*

PVII maintains separate and distinct Web Forum and Newsgroup communities. We do this to ensure you always have access via your preferred medium and device.

#### **1. The PVII Web Forums**

The PVII Web Forum is a modern browser-based community, accessible to both desktop and mobile devices and requires no additional software or plugins.

[Visit The PVII Web Forum community now...](#)

## 2. PVII Newsgroup forums

The Project VII Newsgroup is available via private and secure NNTP servers. In order to subscribe to a newsgroup you must have a newsgroup-capable client installed such as:

1. Mozilla Thunderbird
2. Windows Live Mail
3. Windows Mail/Outlook Express
4. Opera Mail
5. Entourage

### *RSS NEWS FEEDS*

Keep up with the latest news the minute it's released by subscribing to our RSS news feed. If you are not sure how to subscribe, please check this page:

[PVII RSS Info](#)

### *BEFORE YOU CONTACT US*

Before making a support inquiry, please be certain to have read the documentation that came with your product. Please include your Dreamweaver version, as well as your computer operating system type in all support correspondence.

#### **E-Mail:**

[support@projectseven.com](mailto:support@projectseven.com)

#### **Phones:**

330-650-3675

336-374-4611

**Phone hours are 9:00am - 5:00pm Eastern Time U.S.**

### *SNAIL MAIL*

Project Seven Development  
339 Cristi Lane  
Dobson, NC 27017